

Mersey Leven April 2016 Vacation Care

Monday 11/04

Candle Paintings
Scratch Board Masks



Cheese Biscuits and Dip
afternoon tea

Tuesday 12/04

EXCURSION

SPLASH

**Bus leaves 10.45 and
returns 3pm**

**Please pack plenty to eat
& drink**



Wednesday 13/04

Pine Cone Animals
Amazing Maize
Chilli Con Carne for lunch



Fruit Platter for afternoon tea

Thursday 14/04

EXCURSION

JUNGLE GYM

Bus leaves at 10.30 returns
3.30pm

**Please pack plenty of food and
drinks.**



Friday 15/04

Stain Glass Windows or
Garden Designs
Game of Flags



Pikelets for afternoon tea

Monday 18/04

Sand Art Bracelets
and Rangoli Designs
Sponge Stamp Painting



Scones/ Jam and cream
for afternoon tea

Tuesday 19/04

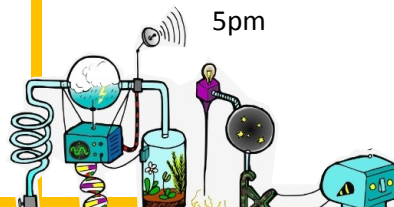
Paper Plate Jellyfish
Leaf Rubbings
Zucchini Slice for
afternoon tea



Wednesday 20/04

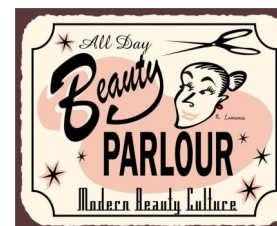
EXCURSION/Launceston

Motor Museum
Lunch at Monkey Park
Queen Victoria Museum and
Science Factory
Bus leaves 9.30 and returns
5pm



Thursday 21/04

Hair and Beauty Day
Wooden Transport Shapes to
decorate
Choc Chip Cookies for
afternoon tea



Friday 22/04

Celebrating
ANZAC DAY
Poppies to make
Wreaths
Anzac Biscuits for afternoon
tea



*** ABOVE PROGRAM IS IN ADDITION TO ALL REGULAR DAILY ACTIVITIES**

Mersey Leven April 2016 Vacation Care

11th April - 22nd April 2015

MERSEY LEVEN VACATION CARE PROGRAM (Ages 4 - 12 years)

At 32 - 36 Valley Road, DEVONPORT

Hours: 8.00am - 6.00pm Costs per day ○ \$50.00 ● \$54.00 Excursion ● Water Excursion \$59.00 Less CCB

THINGS YOU NEED TO KNOW!!

Please peruse our program but keep in mind that those activities listed are in addition to things on offer every day:

Wii Computers Sandpit and toys Ripsticks Scooters Bikes Cricket Basketball Football Playstation DVD

We encourage children to be involved in the planning process and they may choose other games, craft activities or outside experiences other than those listed above or on our programme. Your child is our priority and we endeavour to ensure their experience with us is fun and educational. Please talk to a staff member if you have any questions, ideas or concerns.

CONTACT DETAILS:

Mersey Leven 0400 935 995/Emergency 0409 911 391



The following information is important news for parents:

* **Mersey Leven will not take any responsibility for DS's, toys, games and electronic equipment brought onto the premises - mobiles are not to be used at all; (we discourage children bringing mobiles).**

* **EXCURSIONS:**

When planning excursions careful consideration has been given to the interests and suggestions of the children. Mersey Leven Child Care Services is committed to ensuring our legislative requirements are met at all times and will ensure the appropriate staff/child ratio is always maintained. **It is essential that children wear appropriate clothing/footwear to suit the conditions on the day of an excursion.**

* **DEPART & ARRIVAL times:**

We attempt to provide accurate departure and return times. However there are times when we are on excursions and the learning and enjoyment is so rich that we may extend our time. At times we may stop at an unexpected location such as a park on the return from an excursion. In the event of an unexpected stop, staff will follow the appropriate hazard identification and management strategies. Staff can be contacted at all times on the service's mobile (see cover page) or through the Mersey Leven main office, 6424 4855.



* **LUNCHES:**

Please provide a healthy cut lunch and sufficient drinks and snacks for the day. As a reminder, please DO NOT include lollies or soft drinks. Our heating up facilities are minimal - we ask that you please avoid sending foods to be heated. We strongly discourage children sharing their lunches with others. **A packed lunch consisting of foods that DO NOT require heating for excursion days - sufficient food and drink to last the entire day. A substantial water bottle (that can be refilled) is advised.**



* **BOOKINGS:**

If children are booked in and will not be attending on that particular day, parents are requested to notify us of the cancellation ASAP, thus allowing another child to have care. A message can be left on the answering machine, on 6424 4855.



* **HAZARD MANAGEMENT and IDENTIFICATION:**

When attending excursions the staff team discuss any potential hazards and strategies for reducing risk or harm to your child. We strongly believe that in the school years, along with social learning, identifying and managing risks and hazards safely within our environment is an important aspect of educating young children.



* **FIRST and LAST DAY OF BOOKED CARE:**

If your child/children are booked in for either of these days and are **absent** we are obliged under Government Compliance to charge a full fee as no CCB will be obtainable in this instance.

* **DAILY REQUIREMENTS:**

Children must bring their own lunch and refreshments (afternoon tea provided). Appropriate clothing and footwear must be worn at all times. On the days we have planned 'special' cooking for lunches, this is in **ADDITION** to the child's/children's own lunches; just a taster!

32-36 Valley Road, Devonport
www.merseyleven.com.au

Phone: 64244855 Fax:64244799

Email: oshc@merseyleven.com.au